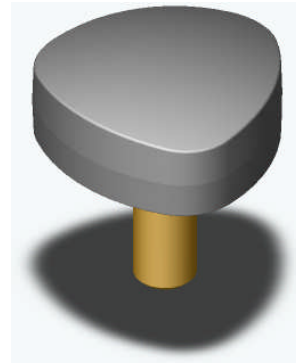
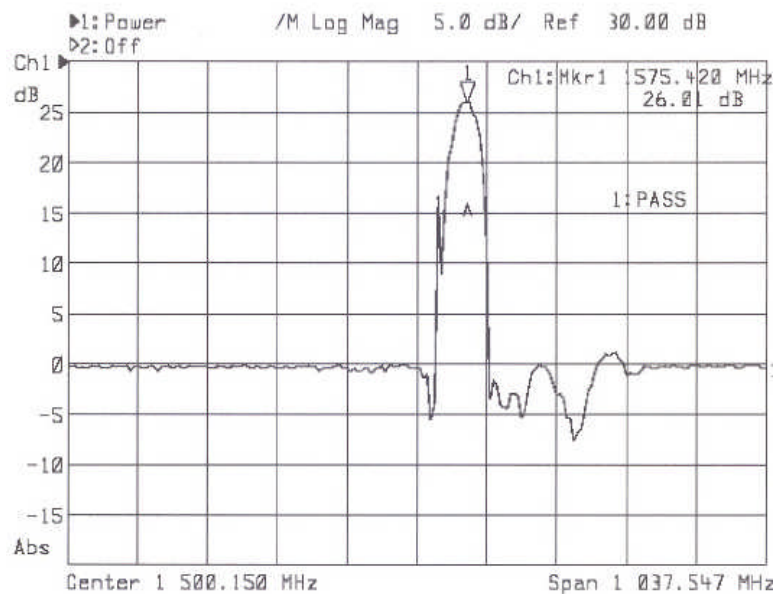


AEB680 / 685 – GPS ANTENNA

GPS Active Antenna with a filtered Ceramic Patch – Circular Polarisation



Frequency:	1575.42MHz
LNA Gain (at 5V):	26dBi nominal
Power Consumption	125mW (max.)
Supply Voltage:	3 – 5V
Supply Current:	15mA – 25mA (18mA nom.)
Impedance:	50Ω



Physical Data

Gross Dimensions:	41mm x 41mm x 26mm (Inc. Bolt), Black ABS Plastic.
Mounting:	Body mount, 10mm or 25mm M10 threaded stud Double-sided adhesive pad 0.8mm thick
Operating Temp:	-40°C to +80°C
Cable:	RG174 – Specified length (-0mm, +100mm)
Connectors:	Nickel-plated brass crimp type. Specified type

The above data is to be used as baseline information only. For a more detailed specification, application support or application approval samples, please contact our technical support help desk on +44(0) 2392 327 020. We reserve the right to modify the specifications without prior notice.